



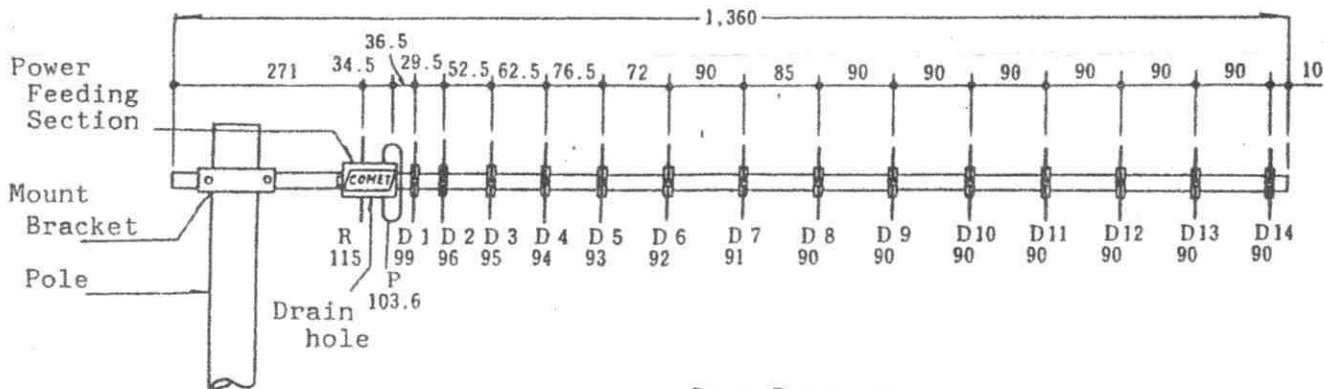
Operation Manual

MODEL **CYA-1216E**

16-element Yagi Antenna for 1200MHz

- * CYA-1216E is compact, light-weight, but high gain directional antenna, and is convenient for carry use.
- * Designed for wide band use, from 1240 - 1300MHz.
- * High quality aluminum, and all stainless steel hardwares assure long durability.
- * Because the Reflector is located at the back-end of the boom-pipe, there arise no influences from pole nor other metallic objects.

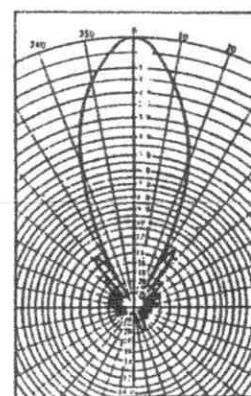
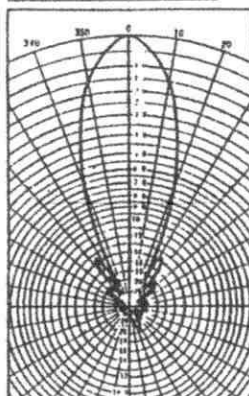
Complete Assembly:



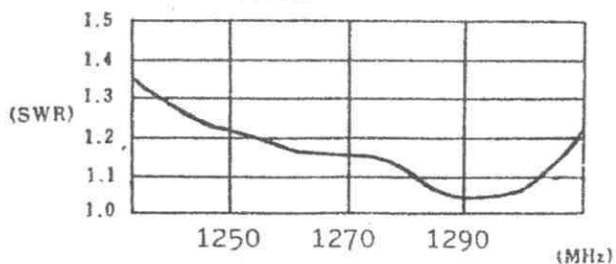
Specifications:

Frequency	: 1240 - 1300MHz
Impedance	: 50 ohm
Gain	: 16.6 dBi
Half Power Angle	: H/31° E/29°
Power	: 100 watt
VSWR	: Less than 1:1.5
F/B ratio	: Over 20dB
Connector	: N-J type
Boom Length	: 1.36m
Pole dia.	: 25 - 65 φ mm
Weight	: 0.64 kg
Wind Velocity	: 45m/sec

Beam Pattern:

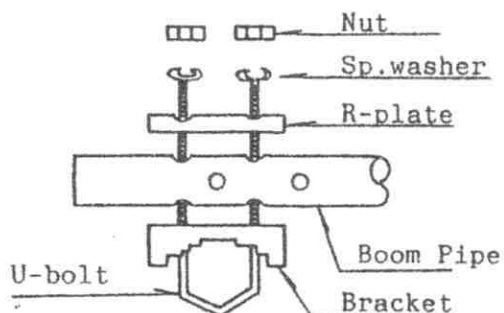


VSWR Characters:



Assembling Works & Remarks:

- * CYA-1216E is ready assembled.
- * When mounting, please remark that the drain hole faces downwards.
- * Regarding the assembling of the mount bracket, please refer to below figure.
- * For long period use, please use the enclosed self-melting tape & vinyl tape for complete water-proof.
- * Because CYA-1216E is for high frequency, high quality, low loss coax. cable is recommended.



Comet Co., Ltd., Japan